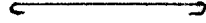


P524 FASCIA GUTTER
7 1/2" x 4" x .094"
EXTRUDED ALUMINUM
ALLOY 6063 T6



P576 ROOF DECK LOWER
6.078" x 2.675" x .078"
EXTRUDED ALUMINUM
ALLOY 6063 T6



P577 ROOF DECK UPPER
6.908" x .323" x .090"
EXTRUDED ALUMINUM
ALLOY 6063 T6



P100 TUBE
2" x 2" x .125"
EXTRUDED ALUMINUM
ALLOY 6063 T6



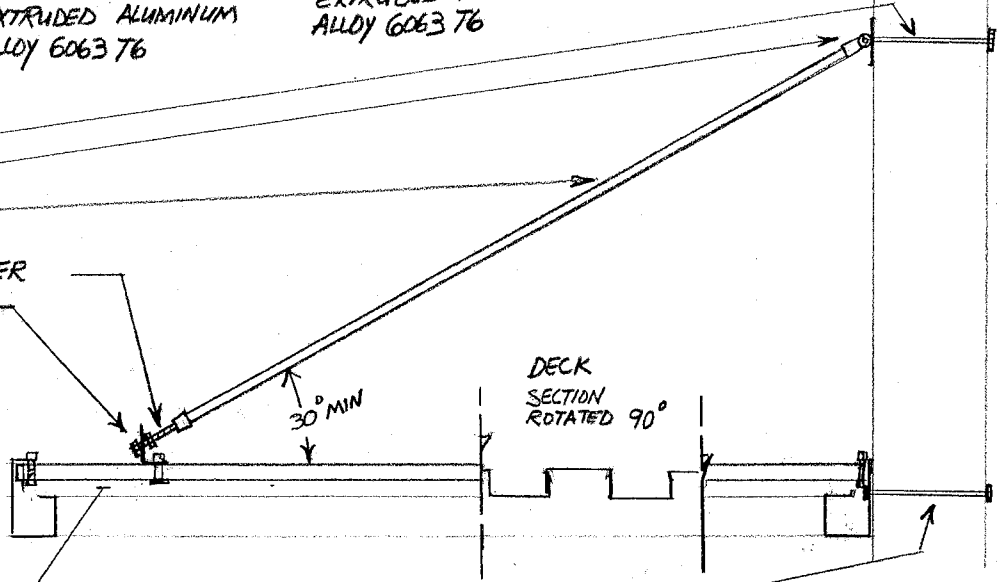
P101 HANGER ROD
1" GALVANIZED PIPE

THRU WALL EYE BOLT 1/2" W/ WASHER
THREADED CLEVIS W 1/2" BOLT
P101 HANGER ROD
1/2" THREADED ROD ADJUSTMENT IN BELL REDUCER
2" BRACKET BOLTED TO P100 TUBE W 1/2" BOLT
P100 TUBE BOLTED TO FASCIA

P524 FASCIA GUTTER

P576/577 ROOF DECK
NOT SHOWN FOR CLARITY SEE SECTION

P524 FASCIA BOLTED THRU WALL



RUSCO SUPER DECK
OVERHEAD ROD CANOPY

SCALE:	APPROVED BY:	DRAWN BY:
DATE:		

RUSCO CUSTOM CANOPIES

865-675-4717 WWW.RUSCOCANOPIES.COM DRAWING NUMBER

SECTION 10530-----EXTRUDED ALUMINUM CANOPIES

1. GENERAL

- A. DESCRIPTION OF WORK: Furnish material and labor to provide the aluminum structural panel canopies as shown on the drawings and/or specified.
- B. SUBMITTALS: Submit product data, complete shop drawings and color samples. Shop drawings shall bear the seal of a registered structural engineer.

2. MATERIALS

- A. MANUFACTURER: Extruded aluminum canopies shall be "Super Deck" as manufactured by Rusco Custom Canopies, Knoxville, TN 865-675-4717. Roll formed components not acceptable.
- B. Fascia/Beam/Gutter shall be Model P524, 7.5" x 4" x .094" 6063 T6 Extruded Aluminum. Roll Formed not acceptable.
- C. Roof Deck shall be Model P577/576, 12" x 2.765" x .078". 6063 T6 Extruded Aluminum. Roll Formed not acceptable.
- D. Overhead Support---Model P100, 1" Round Pipe with threaded adjustment.
- E. Column Support---Model P330, P378 or P606 as called for by the structural engineer.
- F. FINISH-- Components to have Clear Anodized finish or a custom finish as named by the architect.

3. EXECUTION

- A. INSTALLATION----Install canopy in a plumb manner to the highest standards of the trade and in strict accordance with the shop drawings.
- B. ADJUST AND CLEAN: Touch up marred finishes according to manufacturers instructions, check drainage.